

Ausdruck vom: Montag, 15. Februar 2016 17:52:36

PC-Name: HP-118

Benutzername: ksc

HPSDR Setup

General Audio Display DSP Transmit PA Settings Appearance Keyboard CAT Control Tests

Primary VAC 1 VAC 2

Primary Sound Card Setup Details

Driver: HPSPDR (USB/UDP)

Input: HPSPDR (PCM A/D)

Output: HPSPDR (PWM D/A)

Mixer: None

Receive:

Transmit:

Sound Card Selection

HPSPDR

Buffer Size

1024

Line In Gain

20

Channels

8

Sample Rate

96000

Mic In Gain

50

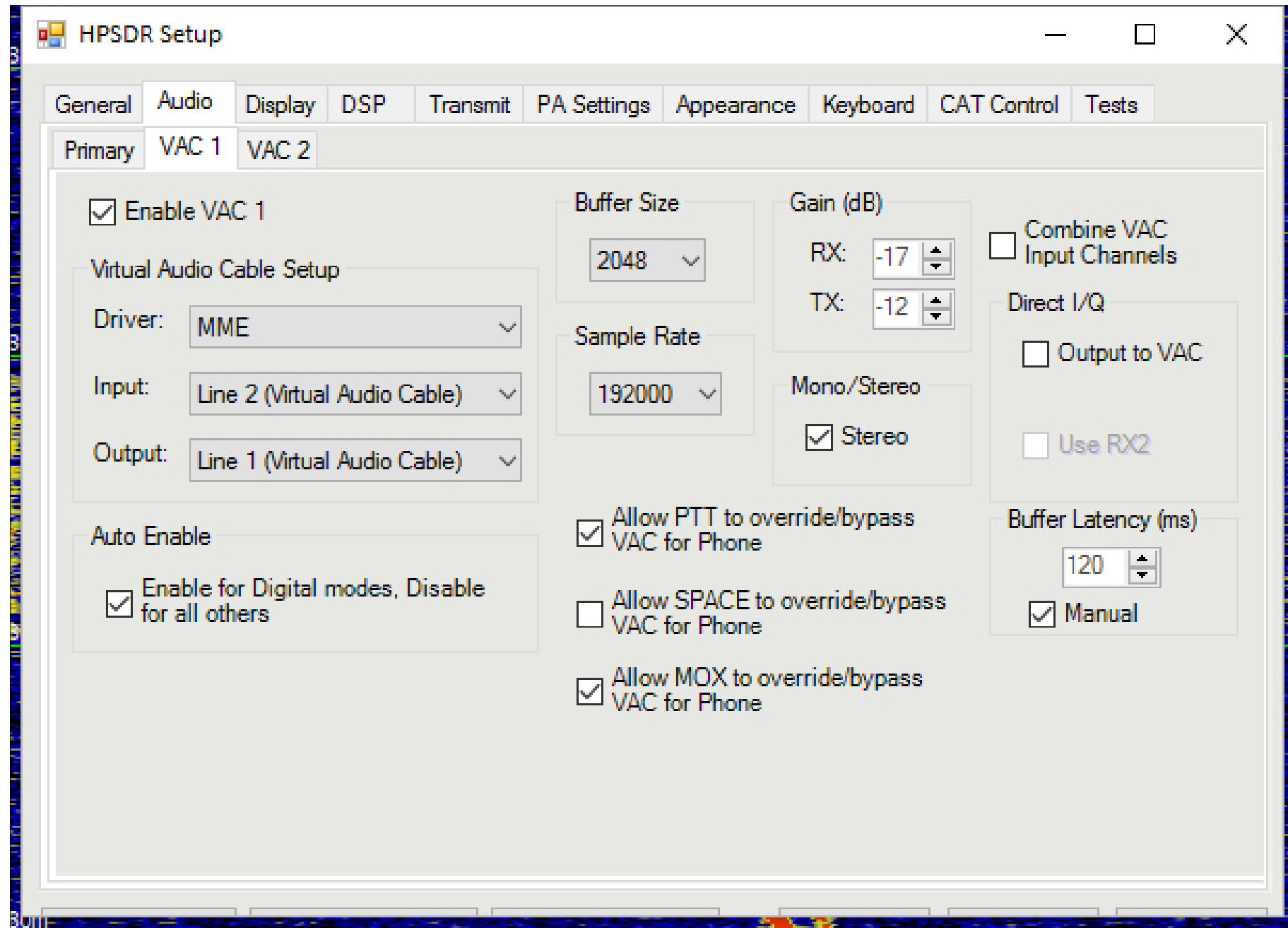
Output Voltage

0.80

Ausdruck vom: Montag, 15. Februar 2016 17:52:56

PC-Name: HP-118

Benutzername: ksc



Ausdruck vom: Montag, 15. Februar 2016 18:08:42

PC-Name: HP-118

Benutzername: ksc

HPSDR Setup

General Audio Display DSP Transmit PA Settings Appearance Keyboard CAT Control Tests

CAT MIDI CAT+

CAT Control

☒ Enable CAT

Port: COM16

Baud: 1200

Parity: none

Data: 8

Stop: 1

PTT Control

☐ Enable PTT

Port: COM6

☐ RTS

☐ DTR

☒ DigL/U Returns LSB/USB

☒ Allow Kenwood AI Command

ID as: TS-2000

Test CAT Commands

RTTY Offset

☐ Enable Offset VFO A

☐ Enable Offset VFO B

DIGL: 1500

DIGU: 1500

ZZSN: 0000-0000

FocusMaster

Mode: None

N1MM Port: 12060 Delay (mS): 2000

Window Title:

Ausdruck vom: Montag, 15. Februar 2016 19:20:05

PC-Name: HP-118

Benutzername: ksc

Settings

General Radio Audio Tx Macros Reporting Frequencies Colors

Rig: Kenwood TS-2000 Poll Interval: 1 s

CAT Control

Serial Port: COM6

Serial Port Parameters

Baud Rate: 57600

Data Bits

☐ Seven ☒ Eight

Stop Bits

☒ One ☐ Two

Handshake

☒ None ☐ XON/XOFF ☐ Hardware

Force Control Lines

DTR: RTS:

PTT Method

☐ VOX ☐ DTR

☒ CAT ☐ RTS

Port: COM1

Transmit Audio Source

☐ Rear/Data ☒ Front/Mic

Mode

☒ None ☐ USB ☐ Data/Pkt

Split Operation

☒ None ☐ Rig ☐ Fake It

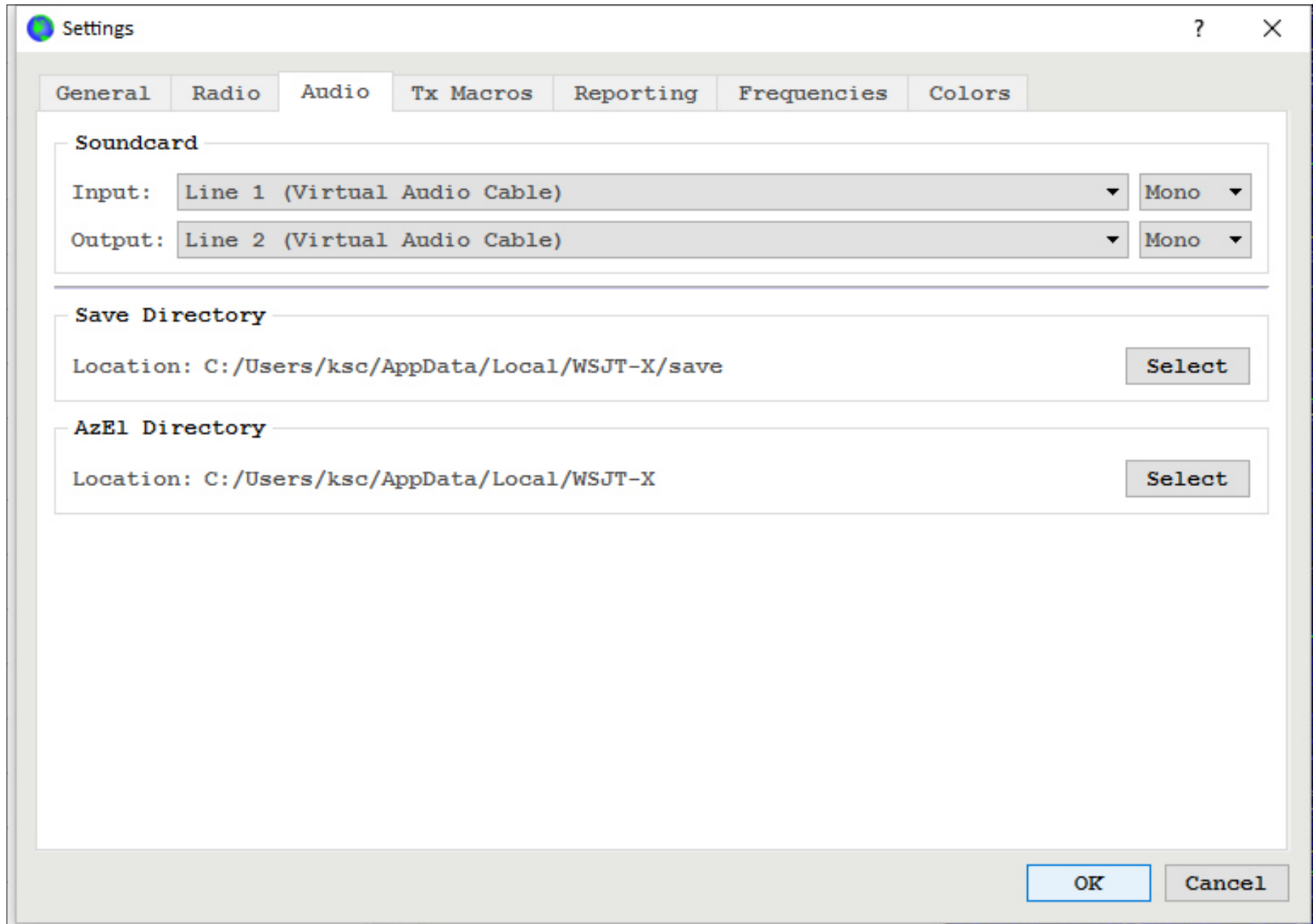
Test CAT Test PTT

OK Cancel

Ausdruck vom: Montag, 15. Februar 2016 19:22:06

PC-Name: HP-118

Benutzername: ksc



The screenshot shows the 'Settings' dialog box for WSJT-X, with the 'Audio' tab selected. The dialog has a title bar with a question mark and a close button. The 'Audio' tab is highlighted among other tabs: General, Radio, Audio, Tx Macros, Reporting, Frequencies, and Colors. The 'Soundcard' section contains two rows: 'Input' and 'Output'. Both are set to 'Line 1 (Virtual Audio Cable)' and 'Line 2 (Virtual Audio Cable)' respectively, with a 'Mono' dropdown menu to the right of each. The 'Save Directory' section shows the path 'C:/Users/ksc/AppData/Local/WSJT-X/save' with a 'Select' button. The 'AzEl Directory' section shows the path 'C:/Users/ksc/AppData/Local/WSJT-X' with a 'Select' button. At the bottom right are 'OK' and 'Cancel' buttons.

Settings

General Radio **Audio** Tx Macros Reporting Frequencies Colors

Soundcard

Input: Line 1 (Virtual Audio Cable) Mono

Output: Line 2 (Virtual Audio Cable) Mono

Save Directory

Location: C:/Users/ksc/AppData/Local/WSJT-X/save Select

AzEl Directory

Location: C:/Users/ksc/AppData/Local/WSJT-X Select

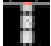
OK Cancel

Benutzername: ksc

Ausdruck vom: Montag, 15. Februar 2016 19:28:46

PC-Name: HP-118

Benutzername: ksc

 Fldigi Konfiguration

Benutzer

GUI

Wasserfall

Modems

Radio

Audio

ID

Diverses

Web

Autostart

IO

Geräte

Einstellungen

Rechter Kanal

Wav

☐ OSS

Gerät:

☒ PortAudio

Aufnahme:

Line 1 (Virtual Audio Cable)

Wiedergabe:

Line 2 (Virtual Audio Cable)

☐ PulseAudio

Server String

☐ Nur Datei Ein/Ausgabe

Std wiederherstellen

Speichern

Schließen